



Serif

Software with Imagination

PanoramaPlus

Image Stitching Made Easy

2



Introduction

Welcome to PanoramaPlus 2, Serif's fully-automatic 2D image stitcher. If you're looking for panorama-creating software that's quick and easy to use, but doesn't compromise on image quality, you've found the right product!

The user interface and powerful panorama-stitching capabilities provided in PanoramaPlus have been developed with ease of use in mind. You'll be surprised just how simple it is to produce superb results—just select a set of images or video clips and PanoramaPlus automatically aligns and stitches them into a panorama.

We've provided some sample images to demonstrate the process and get you started. You'll find these images in your PanoramaPlus installation directory (usually **C:\Program Files\Serif\PanoramaPlus\2.0**), in the **Samples** folder.


Let's get started...



Creating your first panorama

The following steps will help you to quickly get started creating panoramas. We'll show you how to import some sample images, stitch them into a panorama, adjust the crop outline, and then export the finished panorama into a .JPEG file format. Along the way, you'll also notice that you can manipulate and adjust both your source images, and your final panorama. For more detailed information on these features, see the PanoramaPlus online Help.

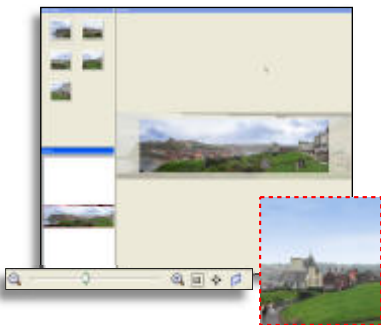
I To import the source images

- 1 Open PanoramaPlus.
- 2 In the Startup Wizard, choose **start from scratch**.
- 3 Click the  **Add Photos** button, (or click **File/Add Photos...**).
- 4 In the **Add Photos** dialog, browse to your PanoramaPlus installation directory (usually **C:\Program Files\Serif\PanoramaPlus\2.0**). In the **Samples** folder, hold down the **Shift** key, and then click to select the five image files named—**Whitby1.jpg** to **Whitby5.jpg**.
- 5 Click **Open**.



The images display in the **Source Images** pane.

Once you've added your images, you can rotate them, reorder them, resize them, and delete them.



II To create the panorama

- 1 Click the  **Create Panorama** button (or click **File/Create Panorama**).

The panorama displays in the **Panorama** and **Navigator** panes.

Use the viewing tools at the lower left of the workspace to change your viewing options.



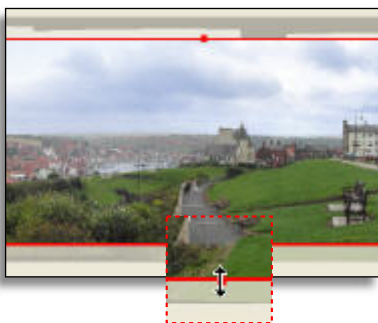
When PanoramaPlus stitches source images into a panorama, it often results in an image with uneven borders, as illustrated right. Unless your source images are perfectly aligned, which is unlikely, you'll need to adjust your panorama so that its edges are squared off. You can easily make these adjustments with the **crop** tool.



- 2 In the **Panorama** pane, click in the image.

A red crop outline appears around a portion of the panorama.

- 3 To adjust the crop outline of the image, simply click on the square crop 'handles,' and then drag to the desired position.



- 4 Repeat step 3, clicking and dragging the crop handles until the borders are aligned.



When you are happy with your finished panorama, you're ready to export it. You can export to a variety of different file formats—JPEG, BMP, GIF, PNG, or TIFF.

In addition, PanoramaPlus lets you make further adjustments to your panorama before you export it. The export process is a simple one, as the following steps will show you.



III To export the panorama

- 1 On the toolbar, click the  **Export Panorama** button.

In the **Export** dialog, your panorama displays in the **Preview** pane.

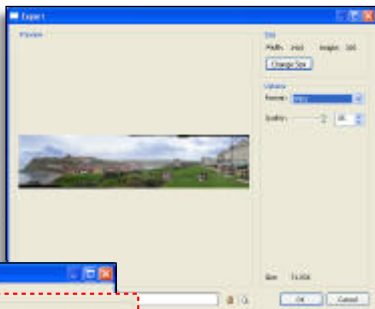
Let's resize this image and export it to .JPEG format.

- 2 In the **Size** section, click **Change Size**.

- 3 In the **Resize** dialog, in the **Width** box, type '1000.'

- 4 Click **OK**.

The panorama is generated and the new dimensions are displayed in the **Export** dialog.



- 5 In the **Options** section, in the **Format** drop-down list, select JPEG. You'll notice that a **Quality** slider is displayed. Accept the '85' default setting.

Once you've chosen your settings, the preview image is updated to reflect the changes. At the lower left of the **Options** section, note that the size of the file is also updated.

- 6 Click **OK**. In the **Save As** dialog, choose the save location and name for your panorama, and then click **Save**.

That's all there is to it! In these few short steps, you've created a panorama and exported it to a .JPEG file format.

We're sure you'll agree that the process could not have been simpler, and we hope you'll continue to enjoy creating breathtaking panoramic images with PanoramaPlus.



Tips for creating successful panoramas

Contrary to popular belief, panoramic photography is not just for professional photographers and doesn't require expensive or specialist equipment. All you need are the basics—a camera, a suitable subject, and a steady hand! As with any type of photography, however, there are some tips and guidelines that will help you achieve the best possible results.

We hope you'll find the following list useful.

- If available, use the camera's automatic stitch mode. If not, lock the exposure. For specific instructions, consult your camera's user manual.
- Although you don't need one, you'll find a tripod useful to ensure that the camera stays level for the whole series of photographs.
- When using video mode, set the camera's zoom and then sweep smoothly across the scene, keeping the camera on the same level.
- Your series of photographs should overlap—an overlap of between 30 and 50% works best—but you don't have to have the same overlap between each pair of photos. For a 360° panorama, remember that your first and last images must also overlap.
- Avoid using flash—it has a limited field of coverage and produces strong shadows, which cannot be aligned when the images are stitched. You should also avoid high contrast scenes, for example, strong shadows set against areas of bright sunlight. As a general rule, keep the sun to your back.
- Try creating vertical panoramas rather than the traditional horizontal scenes. For vertical images, the same principles apply as for horizontal images—just shoot up and down instead.
- To create a 2D panorama, zoom in closer on a particular area of interest and take your pictures in a grid pattern. PanoramaPlus will automatically merge them for you.
- Most important of all—be adventurous and have fun!



License agreement

This document, and the software described in it, is furnished under an end user License Agreement, which is included with the product. The agreement specifies the permitted and prohibited uses.

Copyrights

All Serif product names are trademarks of Serif (Europe) Ltd. Microsoft, Windows, and the Windows logo are registered trademarks of Microsoft Corporation. All other trademarks acknowledged.

Serif PanoramaPlus 2.0 © 2005 Serif (Europe) Ltd. All rights reserved.

This product is based in part on the AutoStitch® automatic panorama image stitching technology developed by the University of British Columbia and protected by the patent US 6,711,293 (Scale Invariant Feature Transform – SIFT).

Contacting Serif

For contact details, please refer to the PanoramaPlus online Help.

