

Serif™

Software with Imagination



PanoramaPlus 3

Companion

Everything you need to create stunning panoramic images

Introduction

Welcome to PanoramaPlus, Serif's fully-automatic 2D image stitcher. If you're looking for panorama-creating software that's quick and easy to use, but doesn't compromise on image quality, you've found the right product!

PanoramaPlus has been developed with ease of use in mind. You'll be surprised by how simple it is to produce superb results—just select a set of images or video clips and PanoramaPlus automatically aligns and stitches them into a panorama.

What's new in PanoramaPlus 3

The following new features are available in PanoramaPlus 3:

- **Virtual reality movies:** Export your panorama as an Apple QuickTime virtual reality (VR) movie.
- **360° support:** You can now create impressive 360° panoramas.
- **Printing:** Print your finished panoramas directly from PanoramaPlus. Various printing options, including tiling, are supported.
- **Vertical panorama auto detection:** PanoramaPlus now automatically detects and stitches together vertical panoramas.
- **Improved cropping:** Quick crop, crop area presets, and automatic framing features provide faster, more effective image cropping.
- **Copy to clipboard:** You can now copy your panoramas to the clipboard and paste them into other documents.
- **Image straightening:** Use the new Straighten tool to fine-tune your images.
- **Edit in PhotoPlus:** View and edit panoramas in Serif PhotoPlus.
- **PDF export:** Export your finished panorama as a PDF file.
- **Email:** Share your panorama with family and friends by sending it as an email attachment.


On the following pages, you'll find step-by-step instructions to get you started. We've also provided sample images, which you'll find in the **Samples** folder of your PanoramaPlus installation directory (usually **C:\Program Files\Serif\PanoramaPlus\3.0**).



Creating your first panorama

The following steps will help you to quickly get started creating panoramas. We'll show you how to import images, stitch them into a panorama, crop the outline, and then export the finished panorama as a JPEG file. Along the way, you'll notice that you can manipulate and adjust both your source images, and your final panorama. For detailed information on specific features, see the online Help.

To import the source images

- 1 Open PanoramaPlus.
- 2 In the Startup Wizard, choose **start from scratch**.
- 3 Click the  **Add** button, (or click **File/Add Photos**).
- 4 In the **Add Photos** dialog, browse to your PanoramaPlus installation directory (usually **C:\Program Files\Serif\PanoramaPlus\3.0**). In the **Samples\Loch Lomond** folder, hold down the **Shift** key, and then click to select the three image files (**Lomond_1.jpg** to **Lomond_3.jpg**).
- 5 Click **Open**.

The images display in the **Source Images** pane.

Here, you can select the images you want to use for your panorama, or you can omit this step and let PanoramaPlus use all the images displayed. You can also rotate, reorder, resize, and delete your source images as required. (For details, see online Help).

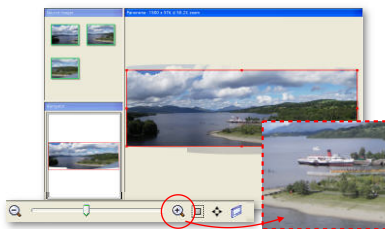


To create the panorama

- 1 On the toolbar, click the  **Stitch** button (or click **File/Stitch**).

PanoramaPlus stitches together the source images, and displays the panorama in the **Panorama** and **Navigator** panes.

You can use the View toolbar at the lower left of the workspace to change your viewing options.



When the panorama is created, the borders of the resulting image are often uneven, as illustrated here. Unless your source images are perfectly aligned, you'll need to crop your panorama so that its edges are squared off.



By default, PanoramaPlus initially crops your image using the **Auto Min Crop** option (see online Help). However, you can adjust the crop outline if desired.



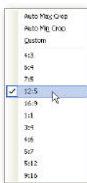
2 PanoramaPlus provides several ways to crop an image:

- Click the  **Crop** tool and adjust the crop outline by clicking and dragging the crop 'handles.'

- or -

- Click the  **Presets** button, and select a new crop size from the drop-down list.

The crop outline adjusts to the selected crop size.



When you are happy with your finished panorama, you're ready to export it.

You can export to a variety of different graphic file formats—JPEG, BMP, GIF, PNG, or TIFF (as well as to a PDF file or VR movie). The export process is a simple one, as the following steps will illustrate.



To export the panorama

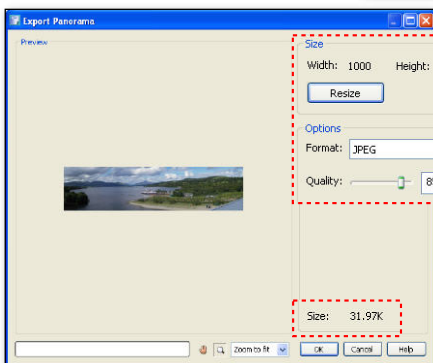
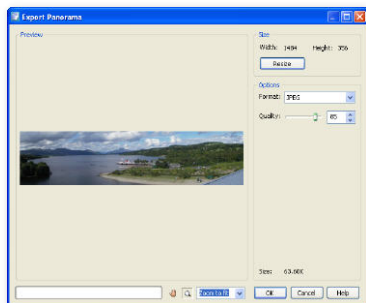
- 1 On the toolbar, click the  **Share** button, and then click **Export Panorama** (or click **File/Export Panorama**).

In the **Export Panorama** dialog, your panorama displays in the **Preview** pane.

Let's resize this image and export it as a JPEG file.

- 2 In the **Size** section, click **Resize**.
- 3 In the **Resize** dialog, in the **Width** box, type '1000.'
- 4 Click **OK**.

The panorama is generated and the new dimensions are displayed in the dialog.



- 5 In the **Options** section, in the **Format** drop-down list, select **JPEG** and accept the default **Quality** setting.

The preview updates to reflect the changes.

At the lower left of the **Options** section, note that the size of the file also updates.

- 6 Click **OK**. In the **Save As** dialog, choose the save location and name for your panorama, and then click **Save**.


That's all there is to it! In these few short steps, you've created a panorama and exported it as a JPEG file.

We think you'll agree that the process could not have been simpler, and we hope you'll continue to enjoy creating breathtaking panoramic images with PanoramaPlus.



Creating 360° panoramas and VR movies

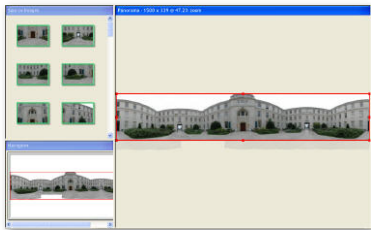
PanoramaPlus 3 lets you create 360° panoramas and export them to Apple QuickTime virtual reality (VR) movies. The following exercise will get you started, but you'll find more detailed information in online Help. In this exercise, you'll create a 360° panorama and VR movie using sample images located in the **Samples\Trent Building (360°)** folder.

- 1 Click **File** then **New**. In the Startup Wizard, choose **start from scratch**.
- 2 Click the  **Add** button and then browse to the **Samples\Trent Building (360°)** folder.
- 3 Select all of the files in the folder and click **Open** to add them to the **Source Images** pane.

- 4 Click the  **Stitch** button.

PanoramaPlus stitches the source images, and displays the panorama in the **Panorama** and **Navigator** panes.

(This process takes longer than in the previous exercise because of the number of source images used.)



- 5 Click the  **Share** button, and then click **Export as VR Movie**.
- 6 In the **Export as VR Movie** dialog, accept the default **Start position**, **Movie viewer size**, and **Panorama size** values. Click **OK**. (When creating your own movies, you may need to adjust these settings. For details, see 'Exporting to VR movie' in online Help.)
- 7 In the **Save As** dialog, name your movie and browse to the desired save location. Click **Save**.
- 8 In the **Export VR Movie** dialog, you can choose whether or not to view your movie as soon as it's created. Click **Yes**.
- 9 In the QuickTime Player, click and drag on the image to pan horizontally and vertically.



License agreement

This document, and the software described in it, is furnished under an end user License Agreement, which is included with the product. The agreement specifies the permitted and prohibited uses.

Copyrights

All Serif product names are trademarks of Serif (Europe) Ltd. Microsoft, Windows, and the Windows logo are registered trademarks of Microsoft Corporation. All other trademarks acknowledged.

Serif PanoramaPlus 3.0 © 2006 Serif (Europe) Ltd. All rights reserved.

This product is based in part on the AutoStitch® automatic panorama image stitching technology developed by the University of British Columbia and protected by the patent US 6,711,293 (Scale Invariant Feature Transform – SIFT).

Contacting Serif

For contact details, please refer to the PanoramaPlus online Help.

