

### 3. How to change your style to match your mood 2

This project will:  
(including Art ATs)

show you how to make a series of experimental portraits from the same original photograph. One of these can be selected to develop in another medium such as paper collage or painting.

Researching and developing ideas: Art 1A

Art context:

helping to locate resources and interpretations of contemporary art practice which can be adapted for use in the classroom Art1J

Suggested Artists/Movements:

- Chuck Close
- Andy Warhol
- Richard Hamilton

Technical content:

Using filters to achieve special effects

---

1

Browse to the file named *Katie original.jpg* for use in this tutorial.



2

To get a stronger outline of the image:  
Select Effects, Sharpen, Sharpen.

3

Now select Effects, Sharpen, Unsharp Mask. Adjust settings to approximately:

Amount: 50    Radius: 1    Threshold: 3

then click OK.

4

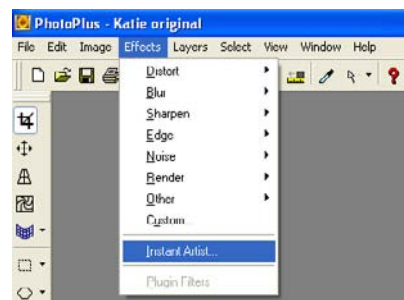
Now crop the image to suit using the Crop tool located at the top left of the tool bar on the left of the screen. (For instructions on using the Crop tool, refer back to the 'How to change your style to match your mood 1' help guide).



Go to File, Save As and name the image as *Katie sharp.spp*.

5

Next, go to Effects, Instant Artist, Pencil.

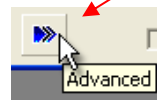
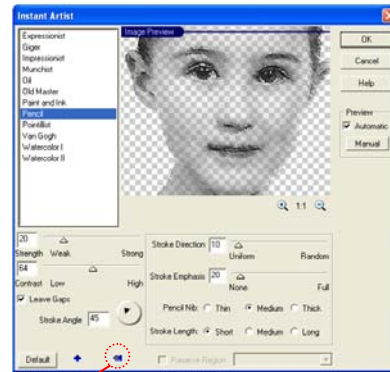


Now apply the settings below and then go to File, Save As and name the image *Katie pencil effect.spp*.

Strength: 20  
 Contrast: 7  
 Leave gaps: Checked  
 Stroke angle: 45

Advanced controls:  
 Stroke direction: 10  
 Stroke emphasis: 20  
 Pencil nib: medium  
 Stroke length: short

Experiment with the settings to achieve a result which pleases you.



Toggle the arrow button to show the advanced controls view.



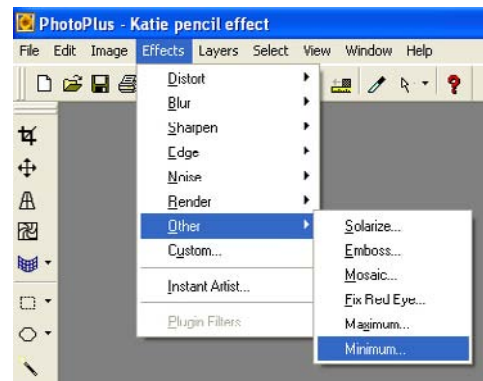
Original Image



Pencil Effect

6

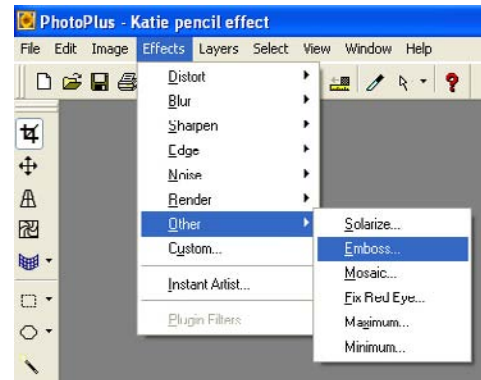
To apply a new effect to the previously saved sharp cropped image, go to File, Open and browse to the file named *Katie sharp.spp*. Select Effects, Other, Minimum. Enter the value 1 for the intensity. Save this image as *Minimum pass.spp*.



Minimum pass effect

7

To apply a new effect open the file named *Katie sharp.spp*. Now, Select Effects, Other, Emboss. Set the depth as 51. Save image as *Katie emboss.spp*



Emboss effect



Original image



Pencil effect



Minimum pass effect



Emboss effect

Try experimenting with the range of Artistic Effects, which will work well with this image as it has strongly defined edges.

To return to the main menu, close this window by selecting **File > Close** from the menu bar.